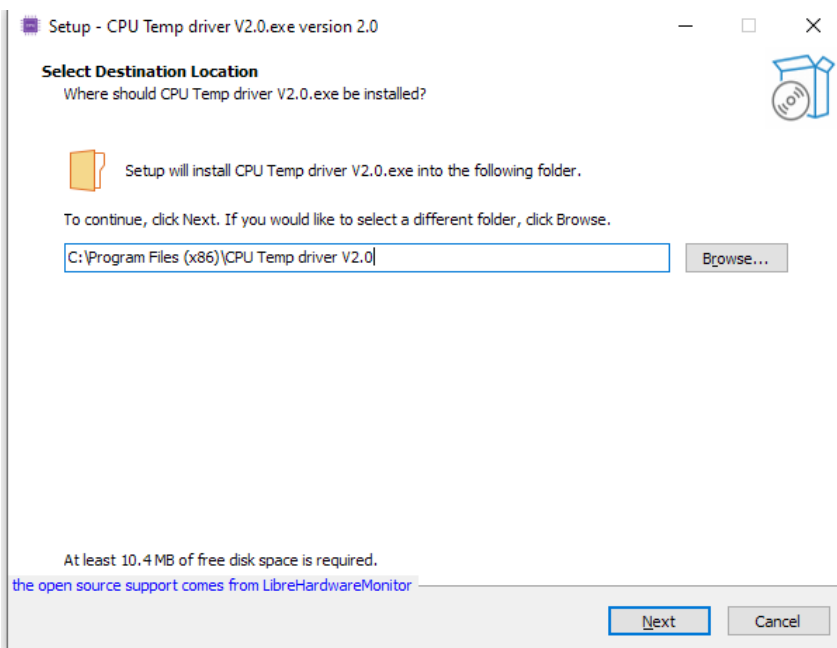


Special note: This driver is only apply for Win10, Win11 systems.

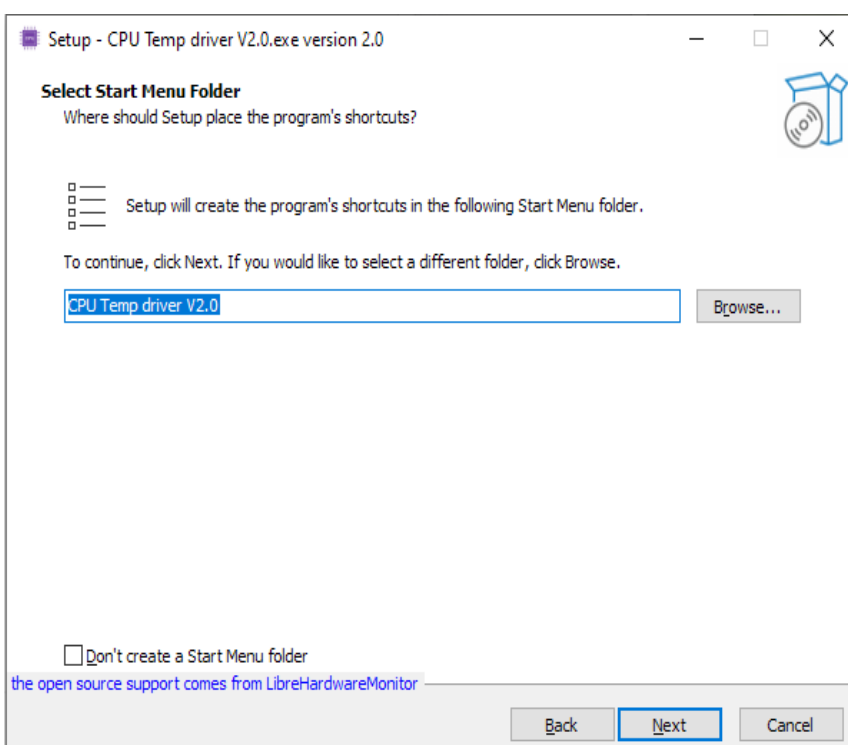
If you have installed anti-virus software, it is recommended to close the anti-virus software before the installation. After the completion of installation, please reopen the anti-virus software and add the driver as trust.

1.Double-click the Driver file“ CPUTEMP Driver Setup V2.0” to begin the installation

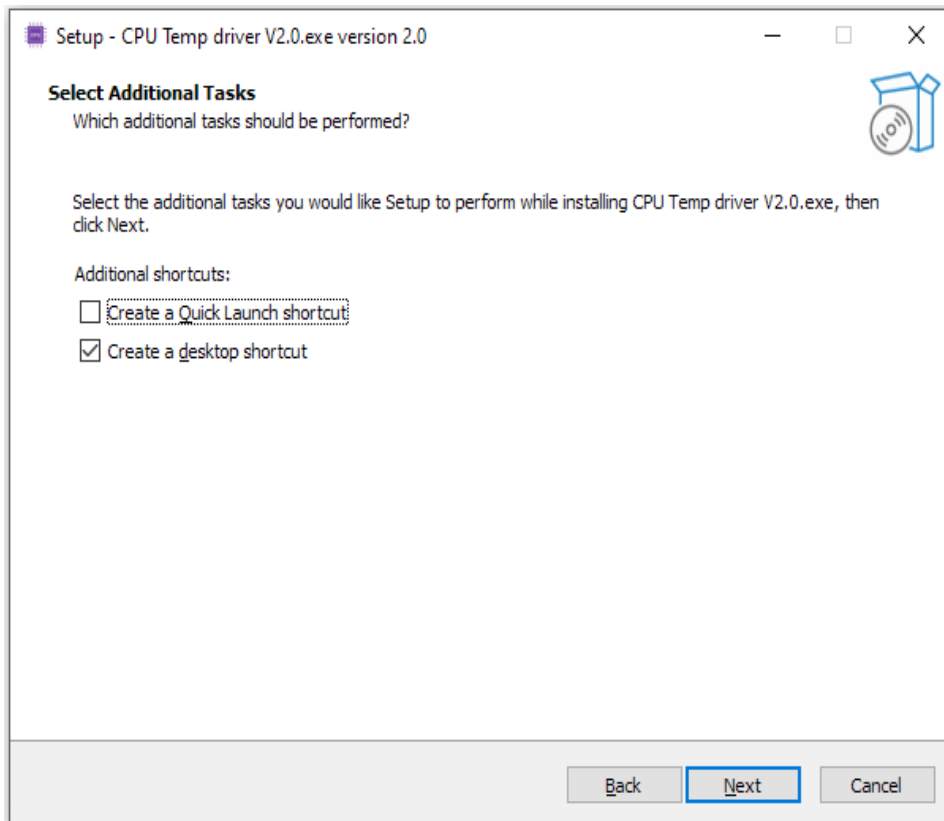
2.Select the location you want for the installation, click“ Next” to go



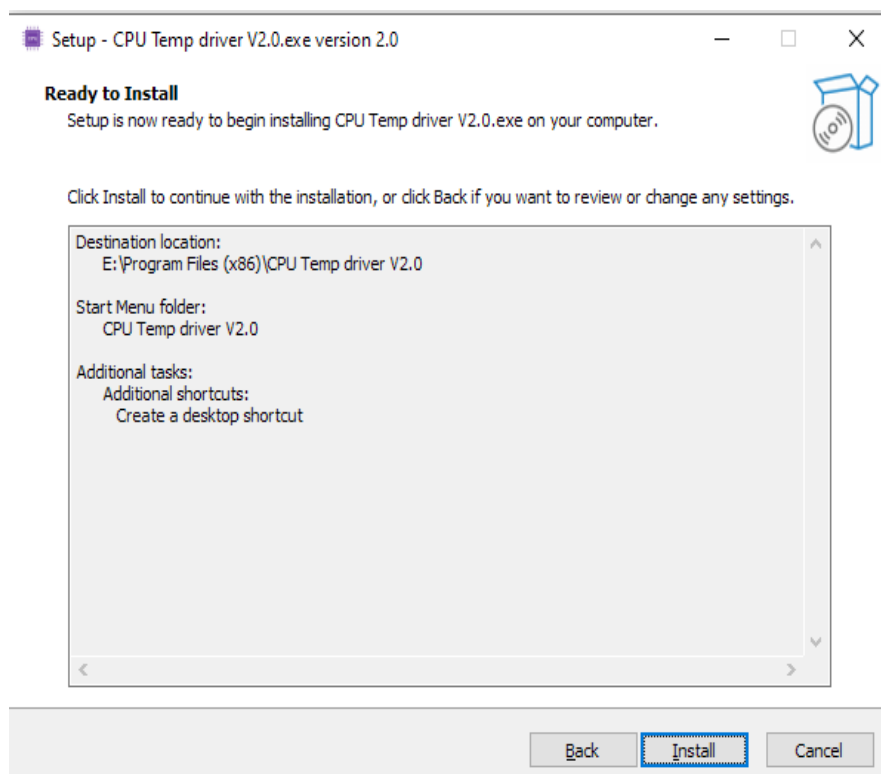
3. click“ Next” to go



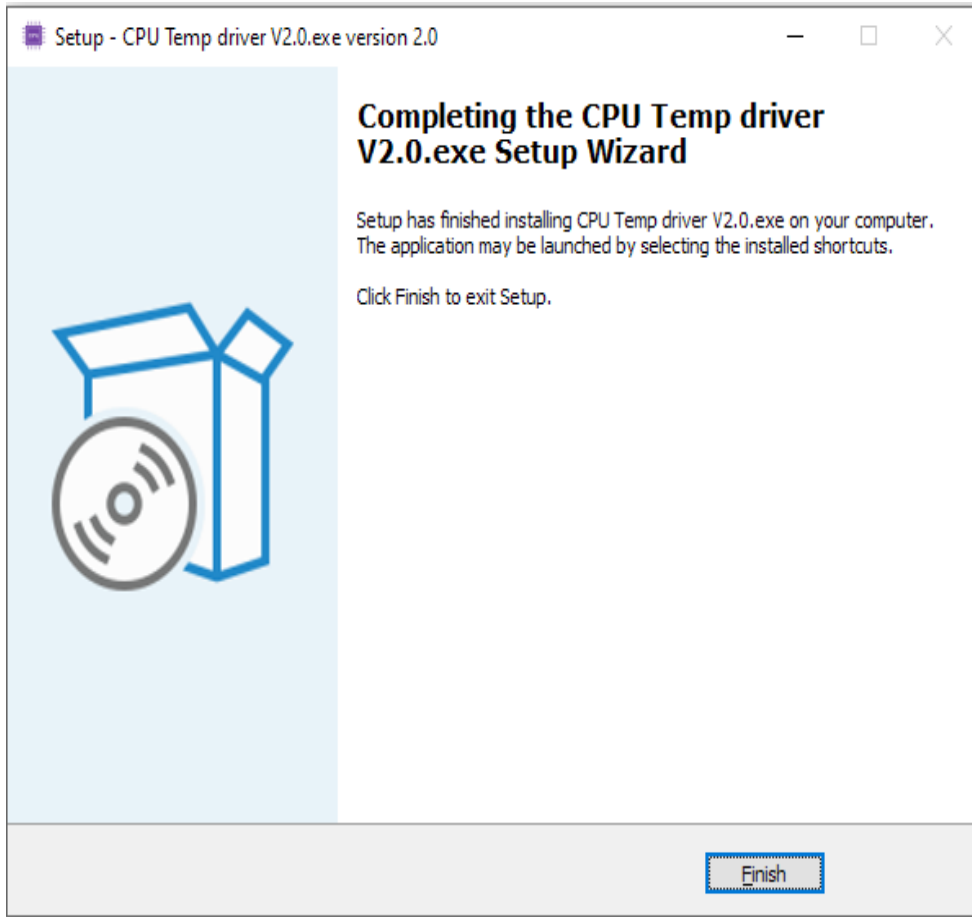
4. According to your own needs, choose whether to create desktop shortcut, click “ Next” to go to the Next step, as follows:



5. Click “ Install” to Install, as shown below



6. Click “ Finish” to complete the installation.



7. After the first installation, you need to open the software before you can use it.