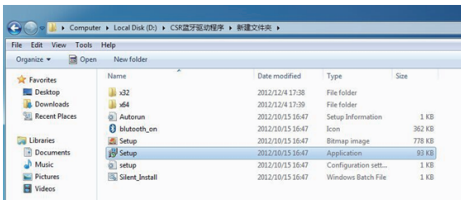


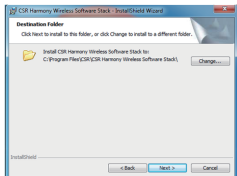
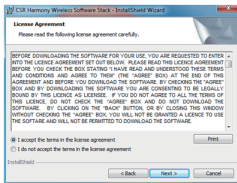
Installation Guide (Take Windows 7 as an Example)

1. Connect Bluetooth adapter to computer, when a message pump up says 'Installing device driver software', insert our disk which contains a driver file and double click 'Setup.exe' to start.

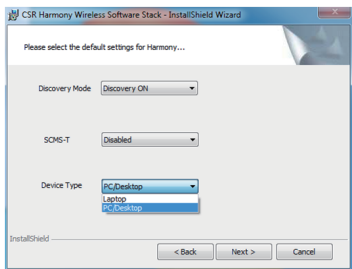
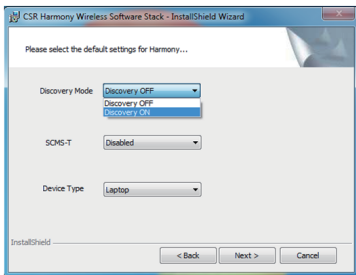


2. Select corresponding language, then confirm.

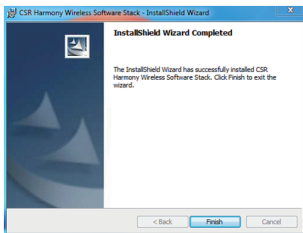
3. Select 'Next'; then, 'I accept the terms in the license agreement'; and 'NEXT' again. Second, assign a destination folder, and click 'Next' afterwards.



4. Bluetooth Harmony Setting: First, open 'Discovery Mode'; second, enable/disable SCMS-T; third, select corresponding device type. finally, click 'Next'.

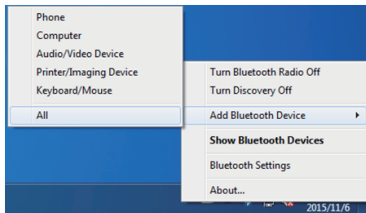


5. Installation wizard complete.

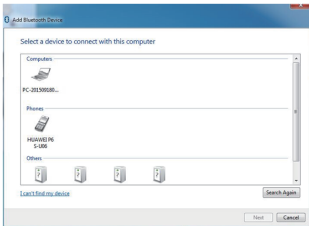


Cell Phone Paring

1. Find Bluetooth icon in toolbar, right click 'Add Bluetooth Device', then select all devices.

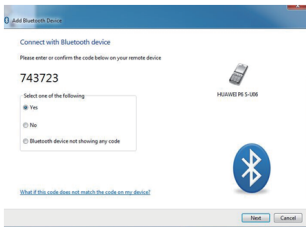


2. Click 'Add Bluetooth Device' again.

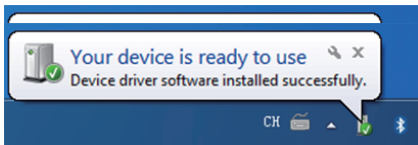
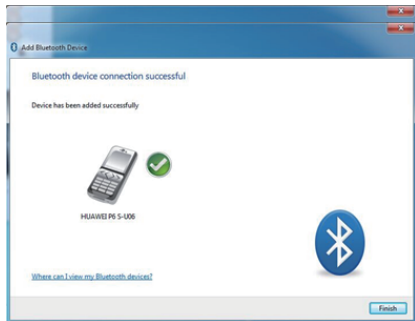


3. Double click the device you want to pair with, then start pairing.

4. First confirm pairing on your phone end, then click 'Next' on computer end.

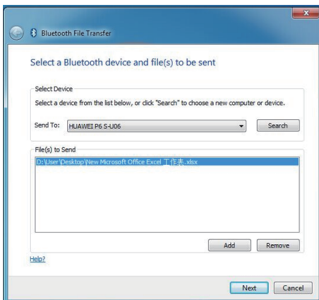
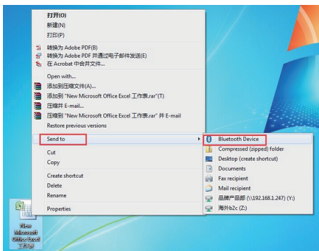


5. Computer and cell phone pairing is done successfully via Bluetooth.

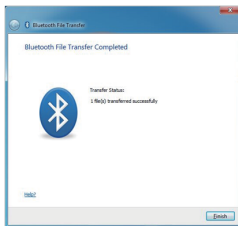


Data Transfer

1. Right click the file which you want to transfer and select 'Send to Bluetooth Device'.

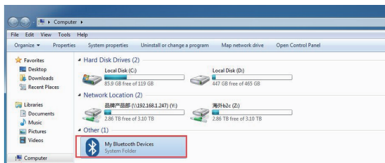


2. Select a receiving device, support selecting multi files simultaneously, here we take 'HUAWEI P7' as an example, click 'Next'.
3. On your phone end, click 'Accept' to start data transfer.

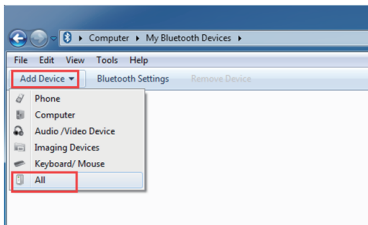


Bluetooth Headset Pairing

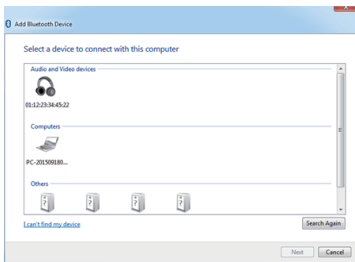
1. Open 'My Computer', select your Bluetooth device.



2. Click 'Add Device' and then 'All'.

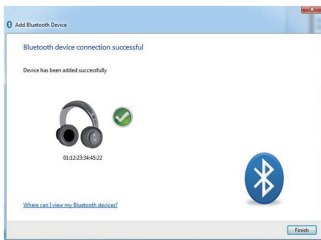


3. Start to search for Bluetooth headset and cell phone.

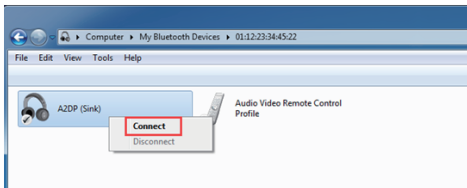


4. Double click corresponding icon of your device to start pairing.

5. Pairing with headset is done successfully via Bluetooth.

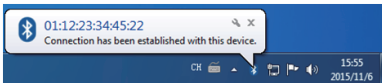


6. Open 'My Bluetooth Devices' and find paired Bluetooth headset, double click it.



7. Right click 'A2DP' icon to set a connectivity.

8. Connection with Bluetooth audio is done successfully.



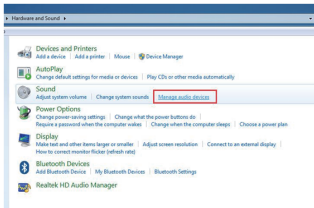
Troubleshooting

1. Connection with A2DP is done successfully, but there exist no output signal?

Solution: Open 'Control Panel', then 'Hardware and Sound' to set voice settings.



Click 'Mange audio devices'.



Open 'Sound' setting, change defaulted audio output device, next find 'Bluetooth Headset' and change setting to defaulted value, than select 'Save'.

